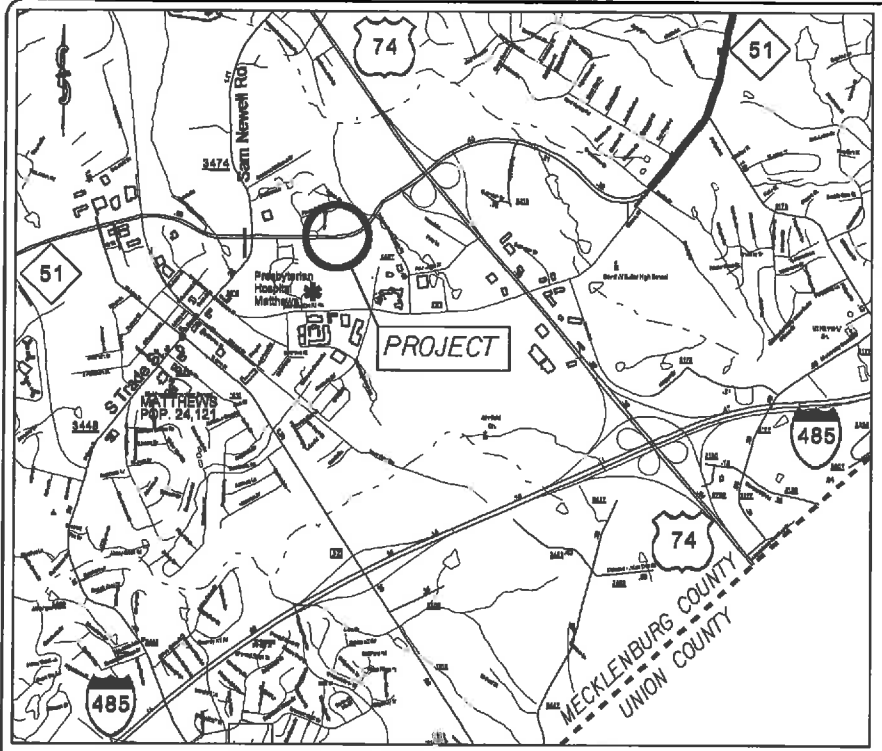


PROJECT: 43922 TIP: 1



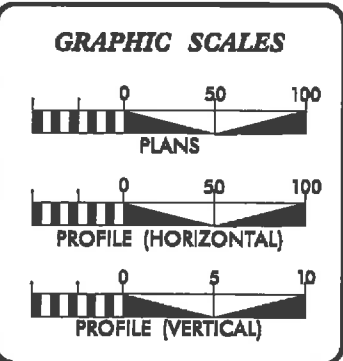
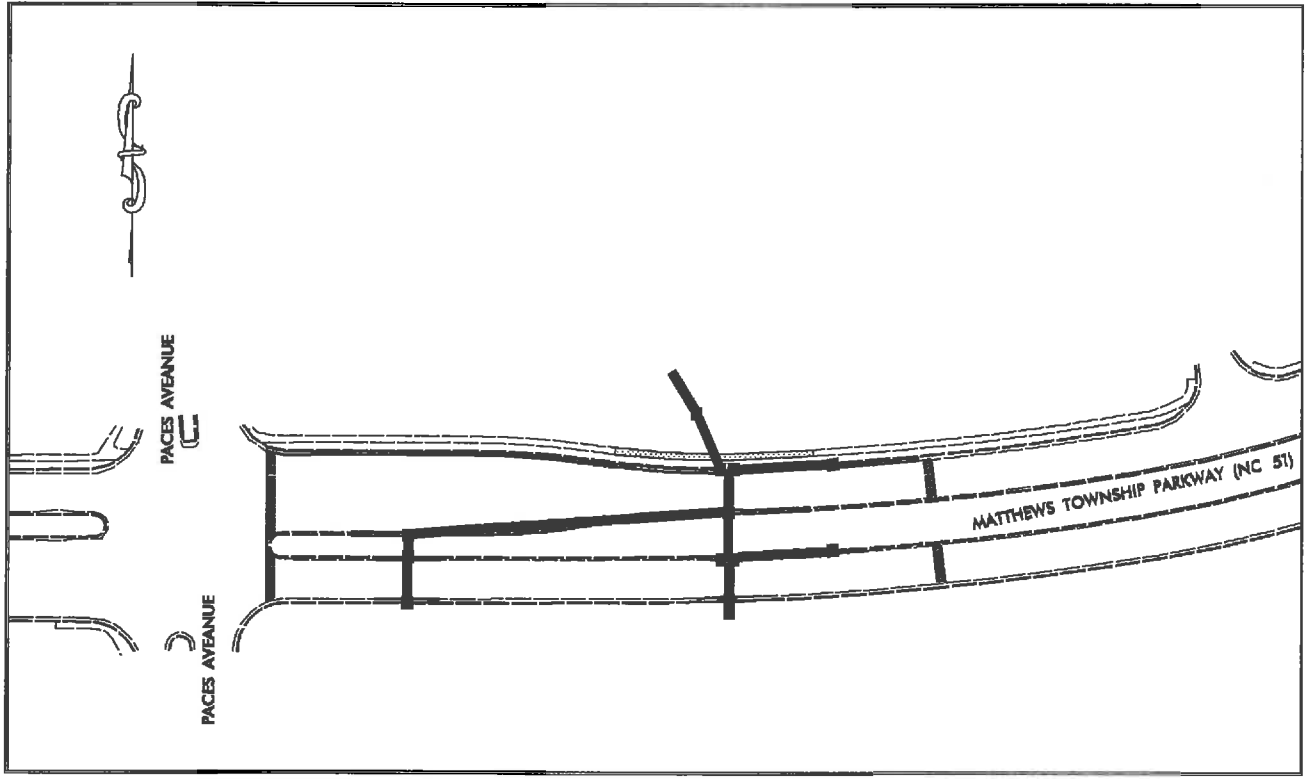
VICINITY MAP NOT TO SCALE

STATE OF NORTH CAROLINA  
DIVISION OF HIGHWAYS  
**MECKLENBURG COUNTY**

**LOCATION:** INTERSECTION OF NC 51 AND PACES AVENUE.

**TYPE OF WORK:** GRADING, MILLING, PAVING, DRAINAGE, CURB & GUTTER,  
THERMOPLASTIC PAVEMENT MARKINGS

STATE	STATE PROJECT REFERENCE NO.	PROJECT NO.	TOTAL SHEETS
N.C.	43922	1	
STATE FUNDING	F.A. FUNDING	DESCRIPTION	
		P.E.	
		R/W	
43922		CONST.	



**DESIGN DATA**

ADT	=	
ADT	=	
DHV	=	%
D	=	%
T	=	%
V	=	MPH

**PROJECT LENGTH**

LENGTH OF ROADWAY PROJECT	=	0.08	MILES
TOTAL LENGTH OF STATE PROJECT	=	0.08	MILES

Prepared In the Office of:  
**DIVISION OF HIGHWAYS**  
DIVISION TEN  
DIVISION DESIGN / CONSTRUCT UNIT

---

2012 STANDARD SPECIFICATIONS

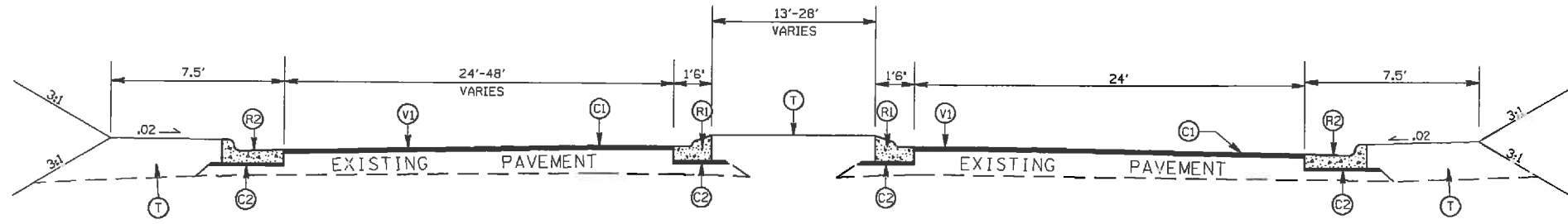
<b>RIGHT OF WAY DATE:</b> _____	<b>RANDY BOWERS</b> PROJECT ENGINEER
<b>LETTING DATE:</b> October 16, 2013	<b>TERRY BURLESON</b> PROJECT DESIGN ENGINEER



DIVISION OF HIGHWAYS  
STATE OF NORTH CAROLINA

APPROVED BY \_\_\_\_\_ DATE \_\_\_\_\_  
EDC ENGINEER

STATE	PROJECT NO.	SHEET NO.	TOTAL SHEETS
N.C.	43922	2	
F.A. PROJECT NO.			



TYPICAL SECTION NO. 1  
STA 10+30 TO 14+50 -L-

### PAVEMENT SCHEDULE

(C1)	PROP. APPROX. 1½" ASPHALT CONC. SURFACE COURSE, TYPE S9.5C, AT AN AVERAGE RATE OF 168 LBS. PER SQ. YD.
(C2)	PROP. VARIABLE DEPTH ASPHALT CONC. SURFACE COURSE.
(R1)	PROP. 1'-6" CURB & GUTTER
(R2)	PROP. 2'-6" CURB & GUTTER
(T)	EARTH MATERIAL
(V1)	MILLING ASPHALT PAVEMENT, 1.5" IN DEPTH

REPLACING AND ADDITION  
OF DRAINAGE STRUCTURES  
ON NC 51 MATTHEWS TOWNSHIP PY.

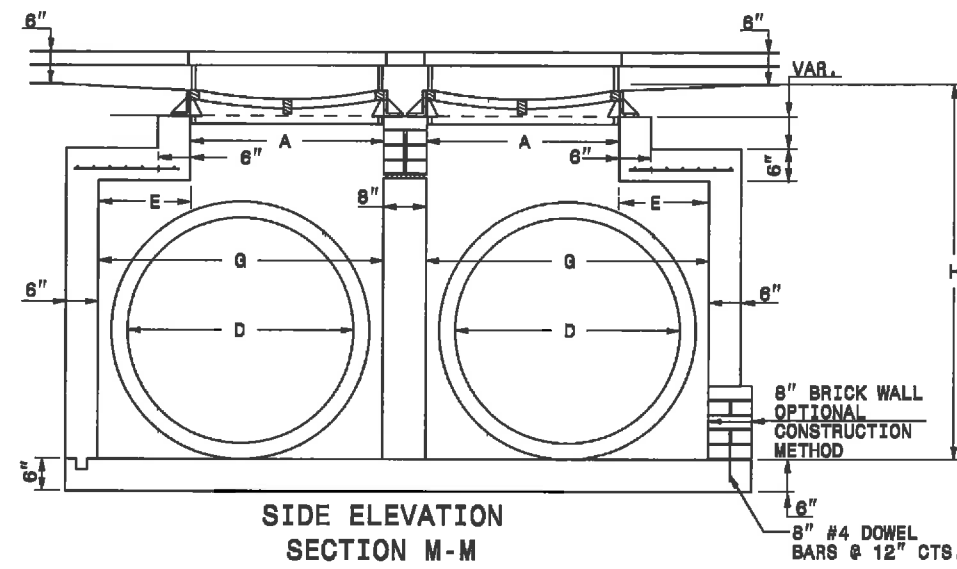
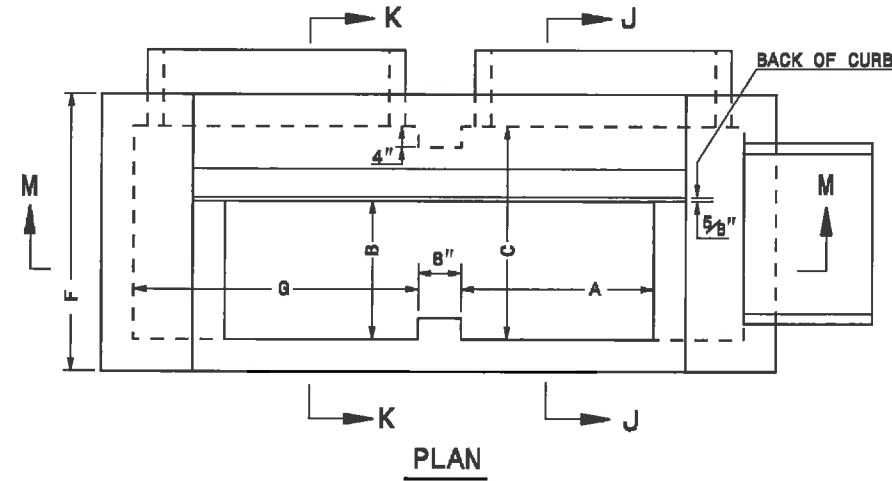
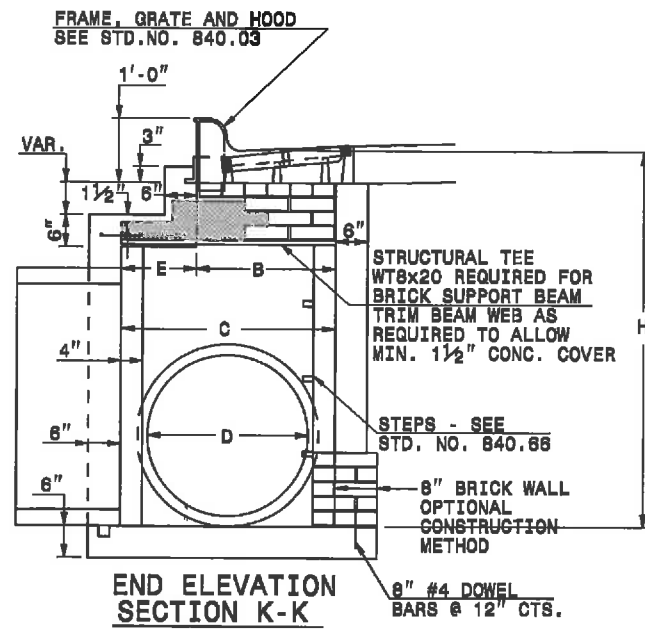
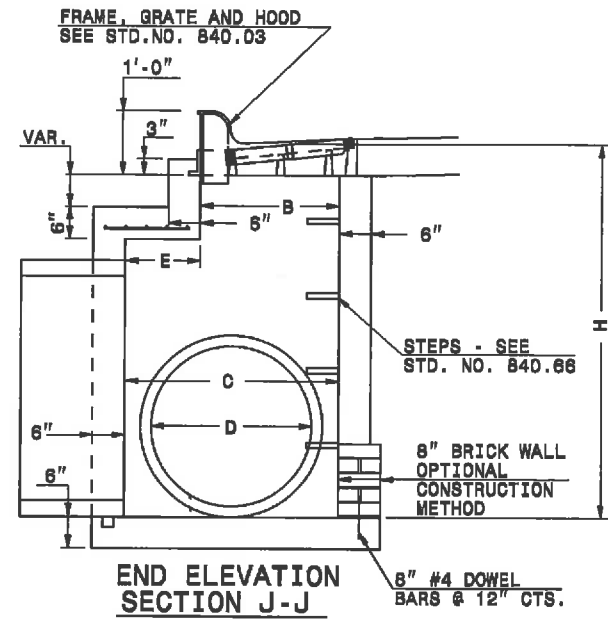
SCALE	N/A		REVISIONS
DATE	3-13		
DWG. BY	JDH		
DESIGN BY	JDH		
APPROVED	RWB		

5/14/99

STATE OF  
NORTH CAROLINA  
DEPT. OF TRANSPORTATION  
DIVISION OF HIGHWAYS  
RALEIGH, N.C.

ENGLISH DETAIL DRAWING FOR  
SIDE BY SIDE HOODED CATCH BASIN  
WITH DOUBLE SIZE BOX

SHEET 1 OF 1  
**84002db1**



**GENERAL NOTES:**

CLASS "B" CONCRETE TO BE USED THROUGHOUT.

ALL CATCH BASINS OVER 3'-6" IN DEPTH WILL BE PROVIDED WITH STEPS ON 12" CENTERS. SEE STD. DWG. NO. 840.66.

OPTIONAL CONSTRUCTION - MONOLITHIC POUR 2" KEY WAY OR #4 BAR DOWELS AT 12" CENTERS AND AS DIRECTED BY THE ENGINEER.

FORMS WILL BE USED IN THE CONSTRUCTION OF THE BOTTOM SLAB.

IF THE PIPE IS SET IN THE BASE SLAB OF THE BOX ADD TO THE BASE AS SHOWN ON STD DWG. NO. 840.00. USE TYPE "E", "F" AND "G" GRATES UNLESS OTHERWISE INDICATED.

WHEN BOX DEPTH IS 8' OR LESS USE 6" WALLS AND BOTTOM SLAB. WHEN DEPTH IS 8' TO 16' USE 8" WALLS AND BOTTOM SLAB. QUANTITIES SHALL BE ADJUSTED ACCORDINGLY.

SEE SHEET 2 OF STD. DWG. NO. 840.02 FOR DIMENSIONS.

SEE STD. DWG. NO. 840.01 FOR BRICK MASONRY CONSTRUCTION INFORMATION.

THE STRUCTURE SHALL BE CONSTRUCTED AND/OR MODIFIED BY THE DIRECTION OF THE ENGINEER.

STATE OF  
NORTH CAROLINA  
DEPT. OF TRANSPORTATION  
DIVISION OF HIGHWAYS  
RALEIGH, N.C.

ENGLISH DETAIL DRAWING FOR  
SIDE BY SIDE HOODED CATCH BASIN  
WITH DOUBLE SIZE BOX

SHEET 1 OF 1  
**84002db1**

23-SEP-2013 11:00 AM  
C:\Users\jeharward\AppData\Local\Temp\20130923\_110000\20130923\_110000.dgn  
At: D:\001\CHD\258894

**PROJECT SERVICES UNIT**  
**STANDARDS AND SPECIAL DESIGN**  
Office 819-250-4128 FAX 819-250-4119

**SEE PLATE FOR TITLE**

ORIGINAL BY:	L.E. Robinson	DATE:	May 1999
MODIFIED BY:	E.E. Ward	DATE:	Oct. 2004
CHECKED BY:		DATE:	
FILE SPEC.:	D88:usr/details/stand/84002db1.dgn		



STATE	PROJECT NO.	SHEET NO.	TOTAL SHEETS
N.C.	43922	4	
F.A. PROJECT NO.			

PARCEL NO.	PARCEL OWNER	TOTAL ACREAGE	AREA TAKEN	AREA REMAINING	TEMP. CONST. EASE.	PERM. DRAIN. EASE.
1	BNP/PC ANNEX, LLC.		N/A			3,448 S.F.

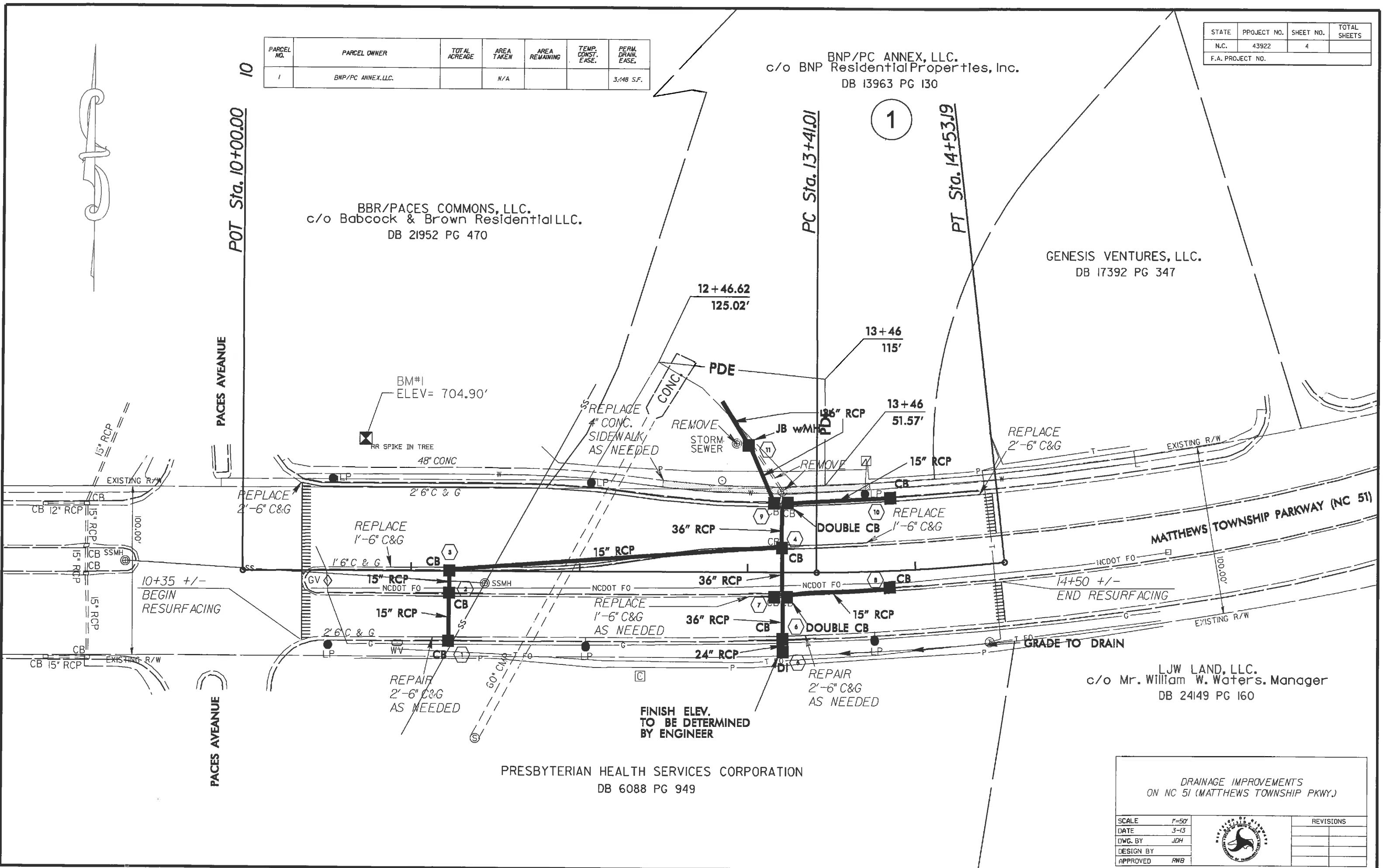
c/o BNP/PC ANNEX, LLC.  
Residential Properties, Inc.  
DB 13963 PG 130


BBR/PACES COMMONS, LLC.  
c/o Babcock & Brown Residential LLC.  
DB 21952 PG 470

GENESIS VENTURES, LLC.  
DB 17392 PG 347

LJW LAND, LLC.  
c/o Mr. William W. Waters, Manager  
DB 24149 PG 160

PRESBYTERIAN HEALTH SERVICES CORPORATION  
DB 6088 PG 949



SCALE			REVISIONS	
SCALE	1"=50'			
DATE	3-13			
DWG. BY	JDH			
DESIGN BY				
APPROVED	RWB			

**PROJECT: 43922**

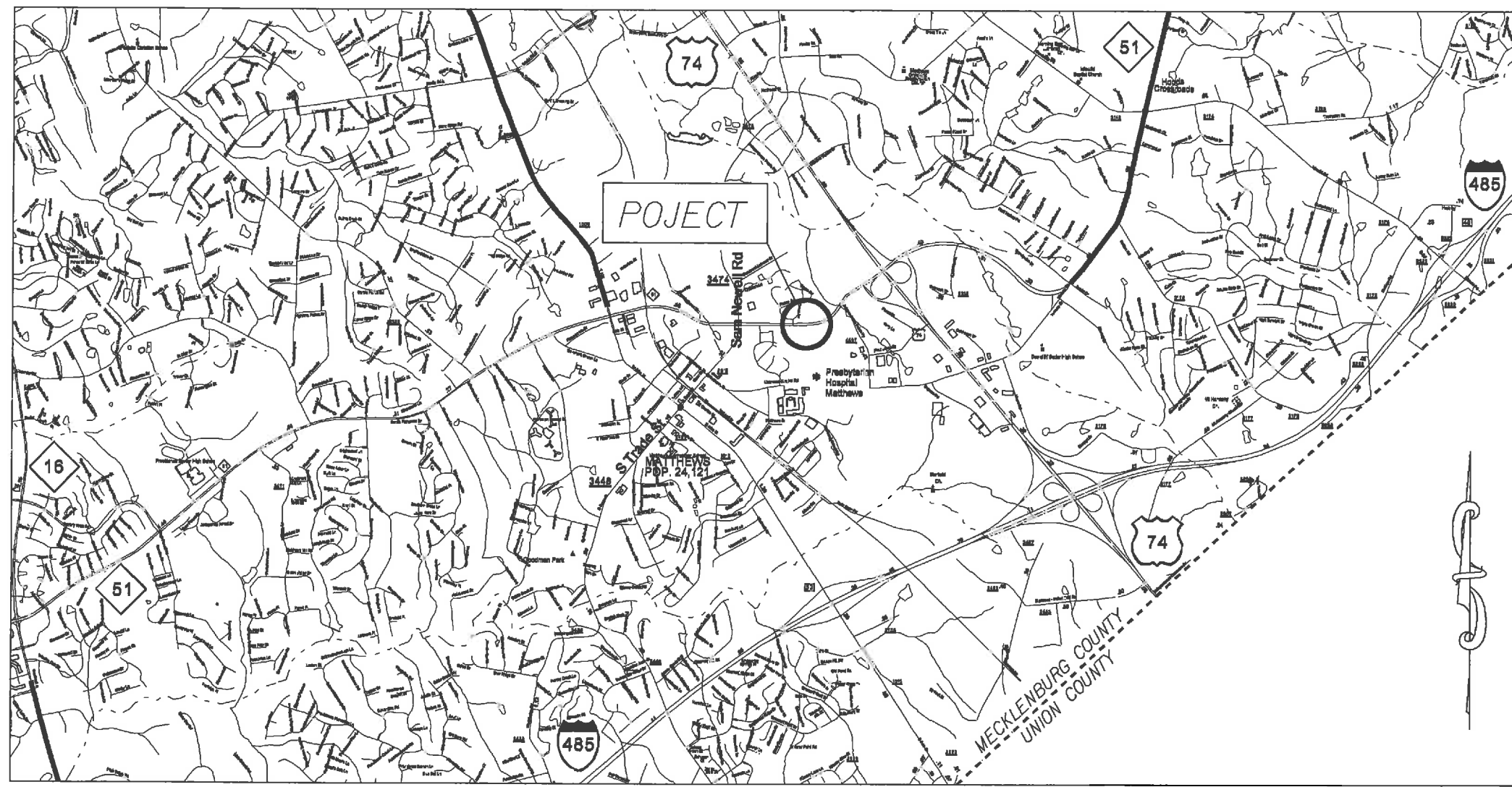
STATE OF NORTH CAROLINA  
 DIVISION OF HIGHWAYS  
 PLAN FOR PROPOSED  
 HIGHWAY EROSION CONTROL

STATE	STATE PROJECT REFERENCE NO.	PROJECT NO.	TOTAL SHEETS
N.C.	43922	EC-1	
STATE PROJ. NO.	F.A. PROJ. NO.	DESCRIPTION	

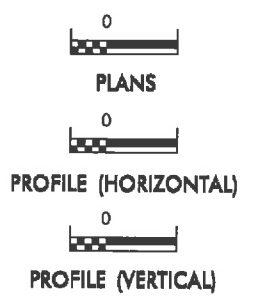
**EROSION AND SEDIMENT CONTROL MEASURES**

Std. No.	Description	Symbol
1630.03	Temporary Silt Ditch	--- TD ---
1630.05	Temporary Diversion	--- TD ---
1605.01	Temporary Silt Fence	--- III III III ---
1606.01	Special Sediment Control Fence	--- Z Z Z Z Z ---
1622.01	Temporary Berms and Slope Drains	--- T ---
1630.02	Silt Basin Type B	--- S ---
1633.01	Temporary Rock Silt Check Type-A	--- R ---
	Temporary Rock Silt Check Type-A with Matting and Polyacrylamide (PAM)	--- R ---
1633.02	Temporary Rock Silt Check Type-B	--- R ---
	Wattle / Coir Fiber Wattle	--- W ---
	Wattle / Coir Fiber Wattle with Polyacrylamide (PAM)	--- W ---
1634.01	Temporary Rock Sediment Dam Type-A	--- RSD ---
1634.02	Temporary Rock Sediment Dam Type-B	--- RSD ---
1635.01	Rock Pipe Inlet Sediment Trap Type-A	--- RPI ---
1635.02	Rock Pipe Inlet Sediment Trap Type-B	--- RPI ---
1630.04	Stilling Basin	--- SB ---
1630.06	Special Stilling Basin	--- SB ---
	Rock Inlet Sediment Trap:	
1632.01	Type A	--- RIT ---
1632.02	Type B	--- RIT ---
1632.03	Type C	--- RIT ---
	Skimmer Basin	--- SB ---
	Tiered Skimmer Basin	--- SB ---
	Infiltration Basin	--- IB ---

**THIS PROJECT CONTAINS EROSION CONTROL PLANS FOR CLEARING AND GRUBBING PHASE OF CONSTRUCTION.**



**GRAPHIC SCALE**



ROADSIDE ENVIRONMENTAL UNIT  
 DIVISION OF HIGHWAYS  
 STATE OF NORTH CAROLINA

THESE EROSION AND SEDIMENT CONTROL PLANS COMPLY WITH THE REGULATIONS SET FORTH BY THE NCG-010000 GENERAL CONSTRUCTION PERMIT EFFECTIVE AUGUST 3, 2011 ISSUED BY THE NORTH CAROLINA DEPARTMENT OF ENVIRONMENT AND NATURAL RESOURCES DIVISION OF WATER QUALITY.

Prepared in the Office of:  
**ROADSIDE ENVIRONMENTAL UNIT**  
 1 South Wilmington St.  
 Raleigh, NC 27611  
**2012 STANDARD SPECIFICATIONS**  
 DONALD HARWARD 3028  
 EROSION CONTROL DESIGNER LEVEL III-A CERTIFICATION #

Roadway Standard Drawings

The following roadway English standards as appear in "Roadway Standard Drawings"- Roadway Design Unit - N. C. Department of Transportation - Raleigh, N. C., dated January 2012 and the latest revision thereto are applicable to this project and by reference hereby are considered a part of these plans.

1604.01 Railroad Erosion Control Detail	1632.01 Rock Inlet Sediment Trap Type A
1605.01 Temporary Silt Fence	1632.02 Rock Inlet Sediment Trap Type B
1606.01 Special Sediment Control Fence	1632.03 Rock Inlet Sediment Trap Type C
1607.01 Gravel Construction Entrance	1633.01 Temporary Rock Silt Check Type A
1622.01 Temporary Berms and Slope Drains	1633.02 Temporary Rock Silt Check Type B
1630.01 Riser Basin	1634.01 Temporary Rock Sediment Dam Type A
1630.02 Silt Basin Type B	1634.02 Temporary Rock Sediment Dam Type B
1630.03 Temporary Silt Ditch	1635.01 Rock Pipe Inlet Sediment Trap Type A
1630.04 Stilling Basin	1635.02 Rock Pipe Inlet Sediment Trap Type B
1630.05 Temporary Diversion	1640.01 Coir Fiber Baffle
1630.06 Special Stilling Basin	1645.01 Temporary Stream Crossing
1631.01 Matting Installation	

STATE	PROJECT NO.	SHEET NO.	TOTAL SHEETS
N.C.	43922	EC-2	
F.A. PROJECT NO.			

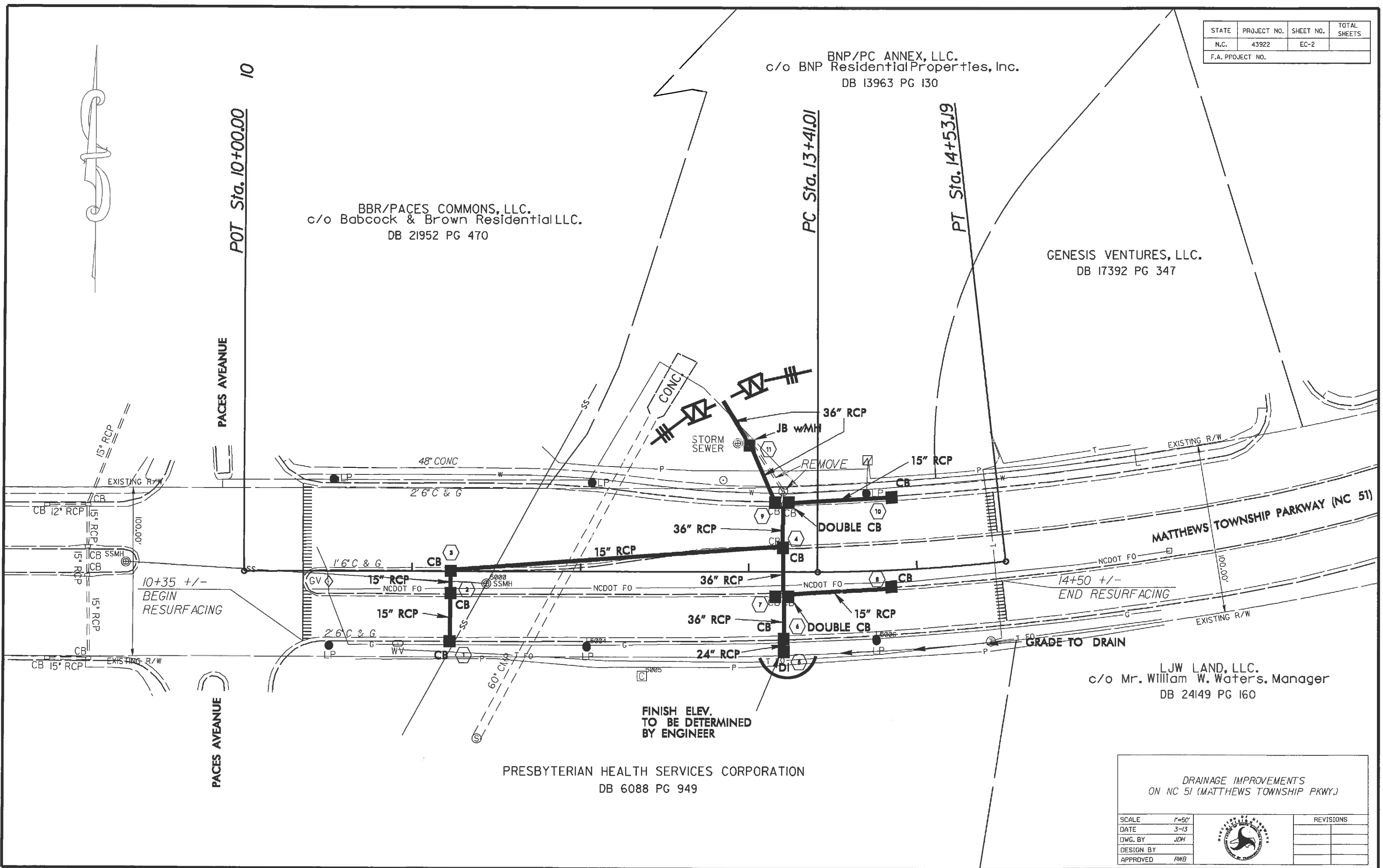
BNP/PC ANNEX, LLC.  
c/o BNP Residential Properties, Inc.  
DB I3963 PG I30


BBR/PACES COMMONS, LLC.  
c/o Babcock & Brown Residential LLC.  
DB 21952 PG 470

GENESIS VENTURES, LLC.  
DB I7392 PG 347

LJW LAND, LLC.  
c/o Mr. William W. Waters, Manager  
DB 24149 PG I60

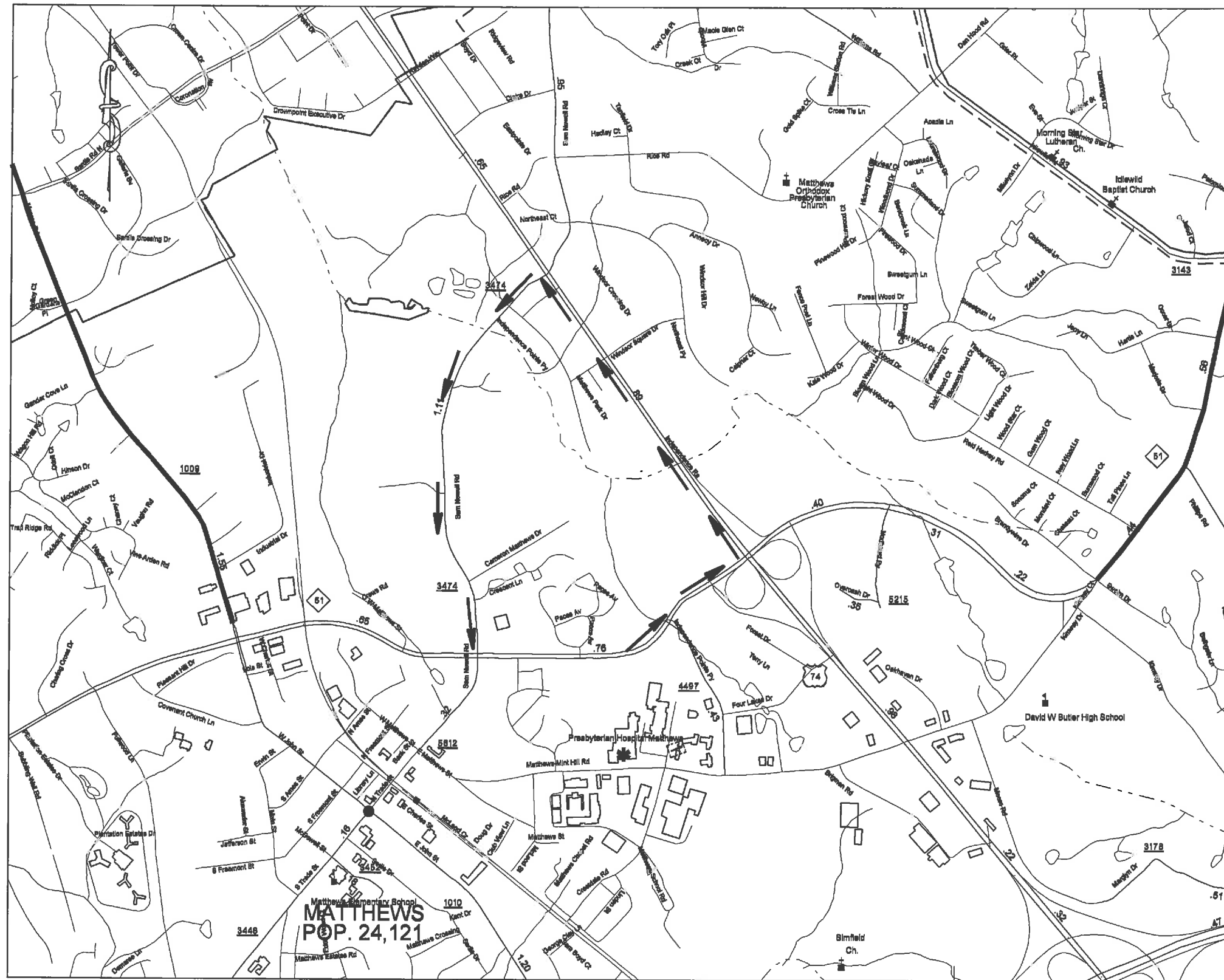
PRESBYTERIAN HEALTH SERVICES CORPORATION  
DB 6088 PG 949



SCALE 1"=50'			REVISIONS
DATE 3-13	DWG. BY JDH		
DESIGN BY			
APPROVED RWB			

# PROPOSED DETOUR ROUTE

STATE	PROJECT NO.	SHEET NO.	TOTAL SHEETS
N.C.	43922	TCP-1	
F.A. PROJECT NO.			



DRAINAGE IMPROVEMENTS  
ON NC 51 (MATTHEWS TOWNSHIP PKWY.)

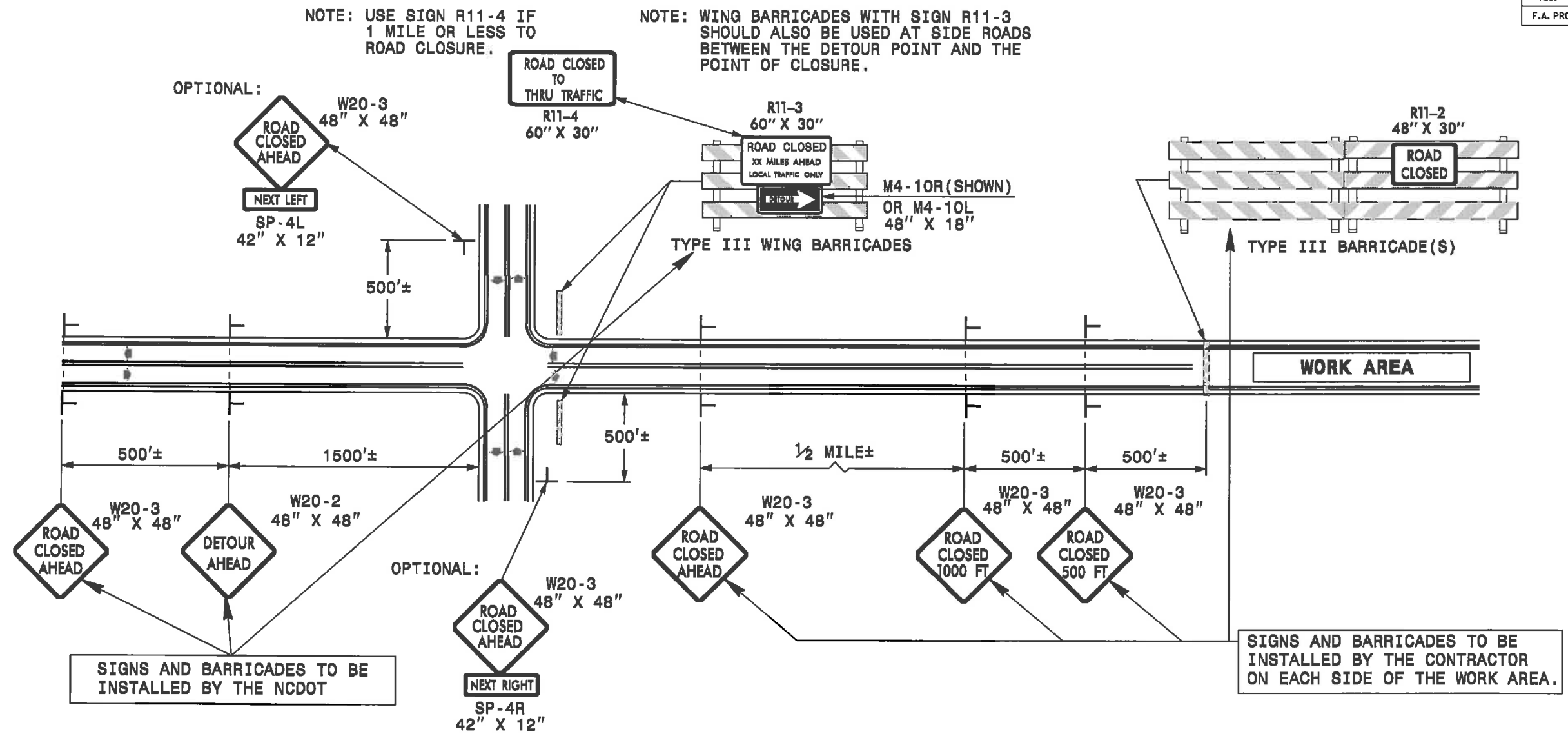
SCALE	-NA-
DATE	10-01-03
DWG. BY	TWB
DESIGN BY	TWB
APPROVED	RWB



REVISIONS	



STATE	PROJECT NO.	SHEET NO.	TOTAL SHEETS
N.C.	43922	TCP-2	
F.A. PROJECT NO.			



**GENERAL NOTES**

- 1-IF NECESSARY USE THIS STD. FOR TWO-LANE, TWO-WAY, AND MULTILANE DIVIDED AND UNDIVIDED ROADWAYS.
- 2-INSTALLATION OF DETOUR ROUTING PANELS, TEMPORARY ROUTE MARKERS, DESTINATION SIGNS, AND ANY NECESSARY MODIFICATIONS TO EXISTING OR PROPOSED REGULATORY OR WARNING SIGNS WILL BE MADE BY NCDOT FORCES UNLESS OTHERWISE DESIGNATED IN THE PLANS. PROVIDE A MINIMUM 21 CALENDAR DAY NOTICE TO STATE FORCES BEFORE A ROADWAY IS CLOSED TO TRAFFIC SUCH THAT THE NECESSARY PROVISIONS CAN BE MADE TO INSTALL DETOUR ROUTE SIGNS, INFORM LOCAL EMERGENCY AND LAW ENFORCEMENT PERSONNEL, SCHOOLS, OR ANY OTHER PARTIES AFFECTED BY THE ROAD CLOSURE.
- 3-INSTALL SIGNS BEFORE THE BARRICADES WHEN CLOSING THE ROADWAY TO TRAFFIC. REMOVE BARRICADES BEFORE SIGNS WHEN OPENING THE ROADWAY TO TRAFFIC. INSTALL/REMOVE SIGNS AND BARRICADES WITHIN THE SAME CALENDAR DAY.
- 4-USE ADDITIONAL TYPE III BARRICADES IN STAGGERED LOCATIONS SUPPLEMENTED WITH SIGN R11-4 "ROAD CLOSED TO THRU TRAFFIC" IN THE EVENT THAT TRAFFIC MUST BE MAINTAINED BEYOND THE DETOUR POINT.
- 5-DO NOT DISPLAY FRACTIONS OR DECIMALS ON SIGN R11-3 "ROAD CLOSED XX MILES AHEAD".
- 6-POSITION WING BARRICADES ON THE SHOULDERS AND SLOPE THE STRIPES DOWNWARD IN THE DIRECTION TOWARD WHICH TRAFFIC MUST TURN IN DETOURING.
- 7-USE PORTABLE SIGNS IF ROAD CLOSURE IS TO BE IMPLEMENTED FOR LESS THAN ONE DAY OR FOR EMERGENCIES.

**LEGEND**

- STATIONARY SIGN
- DIRECTION OF TRAFFIC FLOW

TEMPORARY ROAD CLOSURE  
CLOSURE BEYOND DETOUR POINT

SCALE	-NA-		REVISIONS
DATE	1-19-10		
DWG. BY	TWE		
APPROVED	RWE		